

**Campaign for Conservation**



# Campaign for Conservation

March 2006

# Question?

- Who is making decisions about what Minnesota should look like 25, 50, 100 years from now?

# Mission and Goals

Our mission is:

*“To preserve our cherished outdoor traditions by engaging Minnesotans in protecting our lands and waters for future generations”*



Four specific goals ...

# Goal #1

- to work with and maintain a broad partnership of organizations and individuals dedicated to Minnesota's Great Outdoors.

# Goal #2

- to generate public awareness and support for conservation issues.

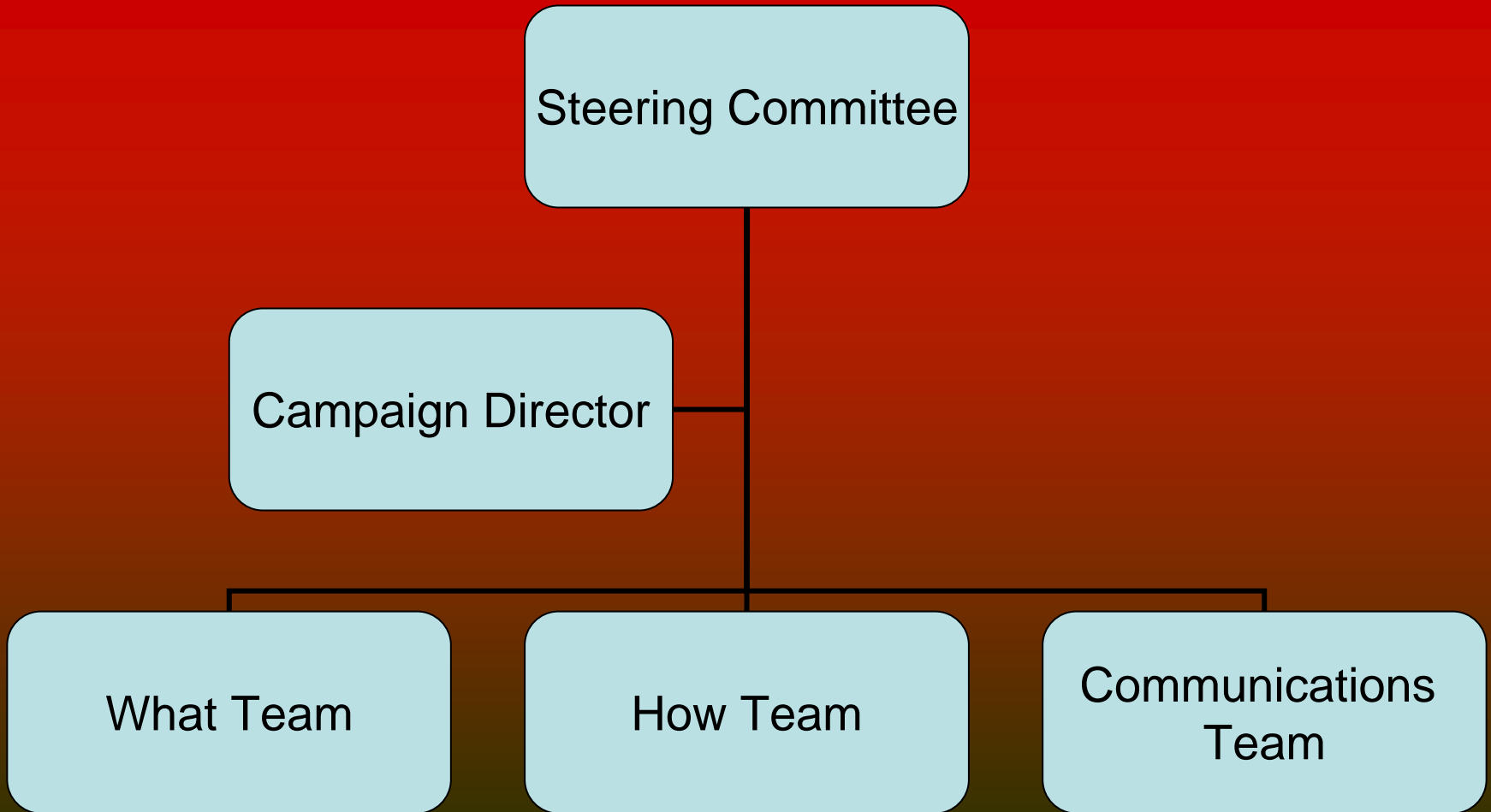
# Goal #3

- to create a 50-year Vision of conservation for Minnesota.

# Goal #4

- to establish large new sources of ongoing, dedicated funding for conservation.

# Organizational Structure



# Steering Committee

**Brad Moore**

**David Hartwell**

**Dorian Grilley**

**Glen Skovholt**

**Jim Klatt**

**Martha Brand**

**Nancy Gibson**

**Paul Austin**

**Peter Bachman**

**Ron Nargang**

**Steve Hobbs**

**Susan Schmidt**

# Partnerships

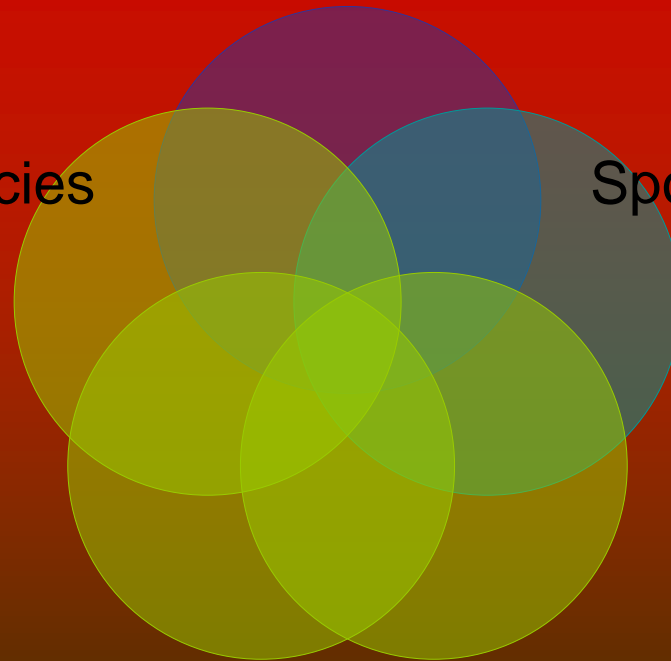
Citizens

Conservation Agencies

Sporting/Habitat Groups

Parks and Trails Groups

Environmental Groups





*Minnesota Calling:*  
Conservation Facts, Trends and Challenges

# Minnesota Calling:

## Conservation Facts, Trends and Challenges

# Minnesota Calling

- Our conservation heritage is calling
- The threats are unprecedented
- The decline is real
- Funding is at historic lows
- Our future prosperity depends on conservation
- The time to act is now

# Ch 1, Theme

**“Minnesota has a proud heritage of responding to threats against its natural resources and taking action to secure the future.”**

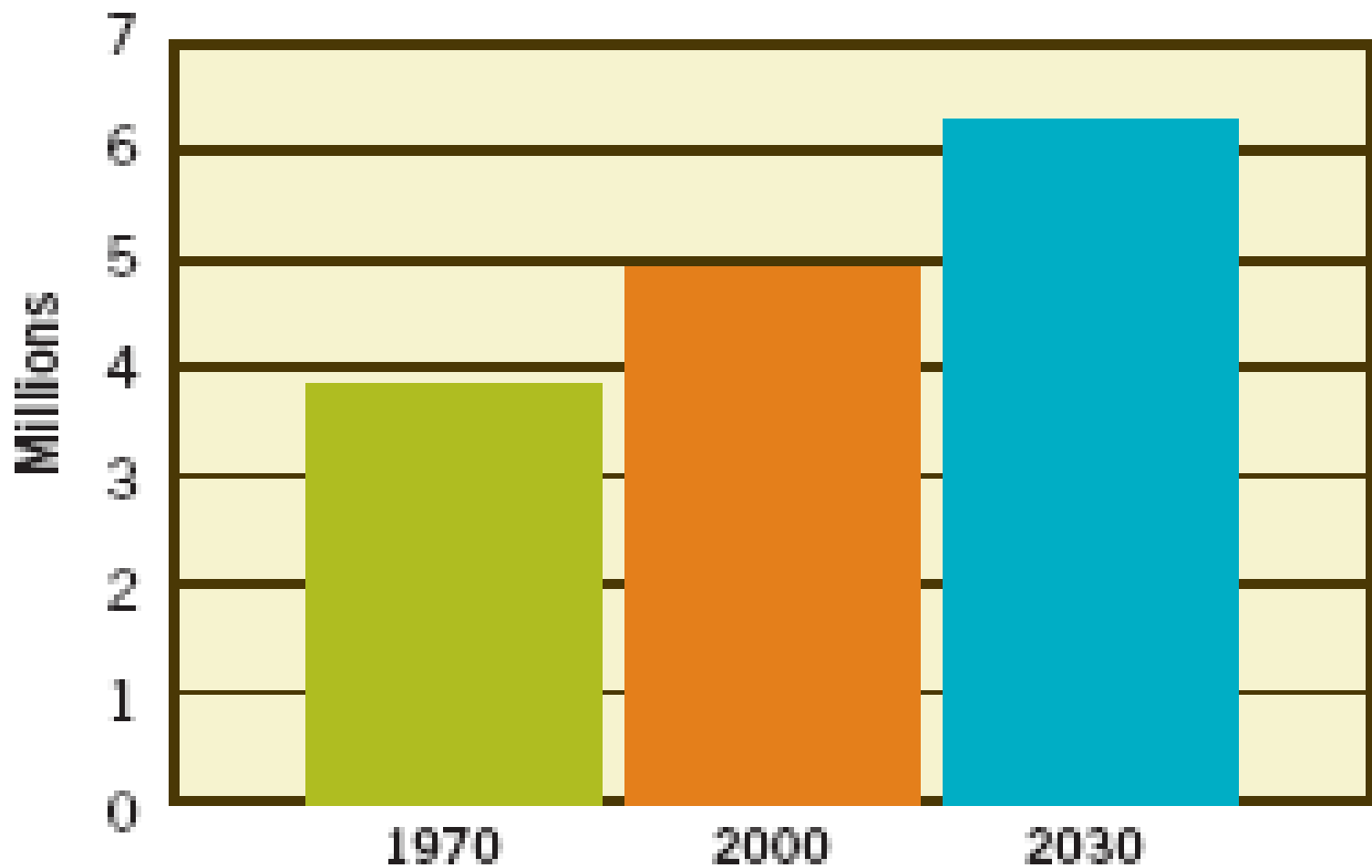
**“Now the future of Minnesota is calling us again to act.”**

# Horace Cleveland: 1880s

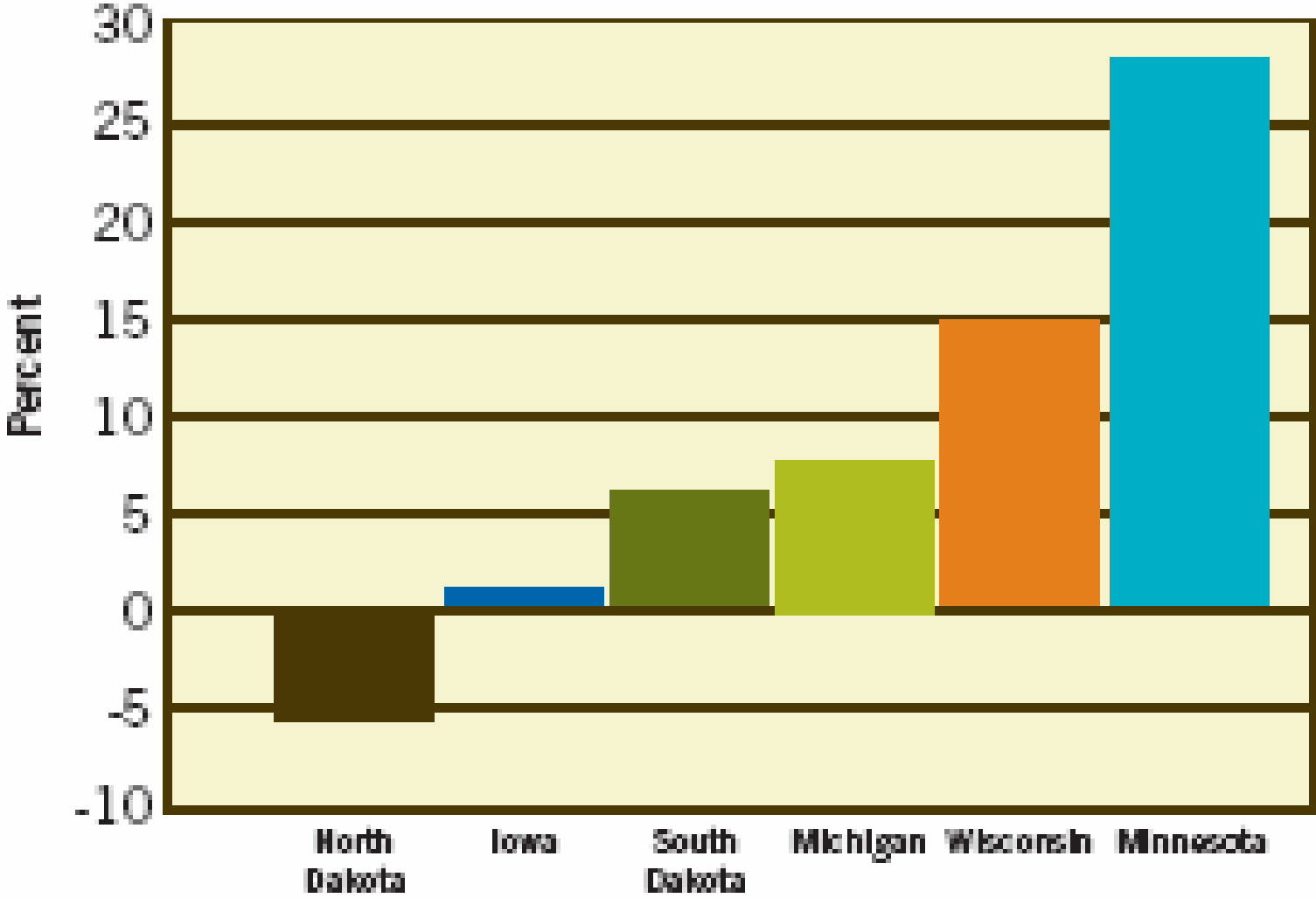
*“Look forward a century, to the time when the city has a population of a million, and think what will be their wants. They will have wealth enough to purchase all that money can buy, but all their wealth cannot purchase a lost opportunity, or restore natural features of grandeur and beauty, which would then possess priceless value ...”*

# Ch. II, Challenges

## Minnesota Resident Population



# Midwest States—Percent Change in Population 2000 – 2030



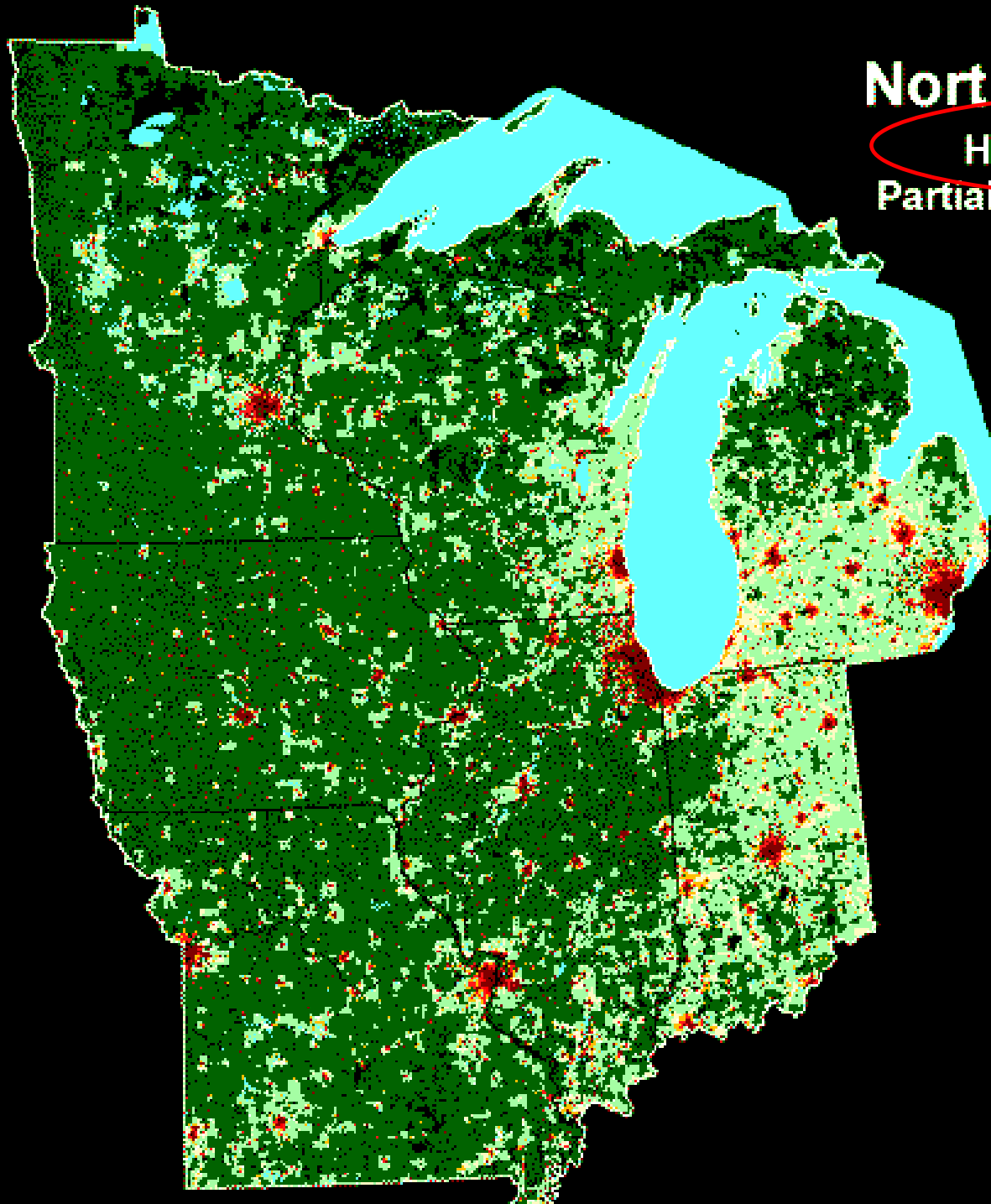
# New Land Consumption Patterns

- Fewer people per household
- More second homes
- Movement to lakes and woods
- Using nearly double the land per person

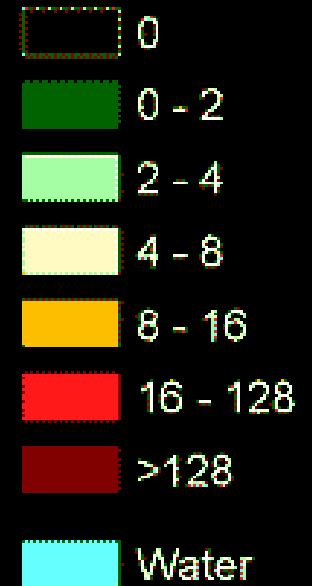
**Result: 1 million acres of farm and natural areas to be developed.**

# North Central Region

Housing Density 1940  
Partial Block Group Resolution



Housing Units  
per Km<sup>2</sup>



# Recreation Opportunities

- Recreation Demands will increase 8 – 14%
- Growth areas particularly affected.

ACRES PER PERSON OF PUBLIC RECREATION LAND IN MINNESOTA			
Year	Acres (US Forest, USFWS, NPS, DNR, Met Council)	Population	Acres Per Person
1983	11,426,462	4,141,458	2.7
1991	11,645,000	4,440,859	2.6
1995	11,758,000	4,660,180	2.6
1997	11,834,000	4,763,390	2.5
2000	11,857,806	4,919,479	2.4

# Ch II, Decline

## Historic losses in habitat:

- Forests 31.5 million acres – 16.3 million today
- Prairies – less than 1% remains
- Wetlands – 58% remains.

# 7 County Metro Area

Timeframe	Population	Rec. Acres	People per Rec. acre
2005	2,642,056	52,000	51
2005 – 2030	966,000	8000	121
2030	3,608,056	60,000	60

# Plant and Wildlife Loss

- Of 1200 wildlife species in MN, 292 are at-risk
- 2400 plant species ~ 200 are at-risk

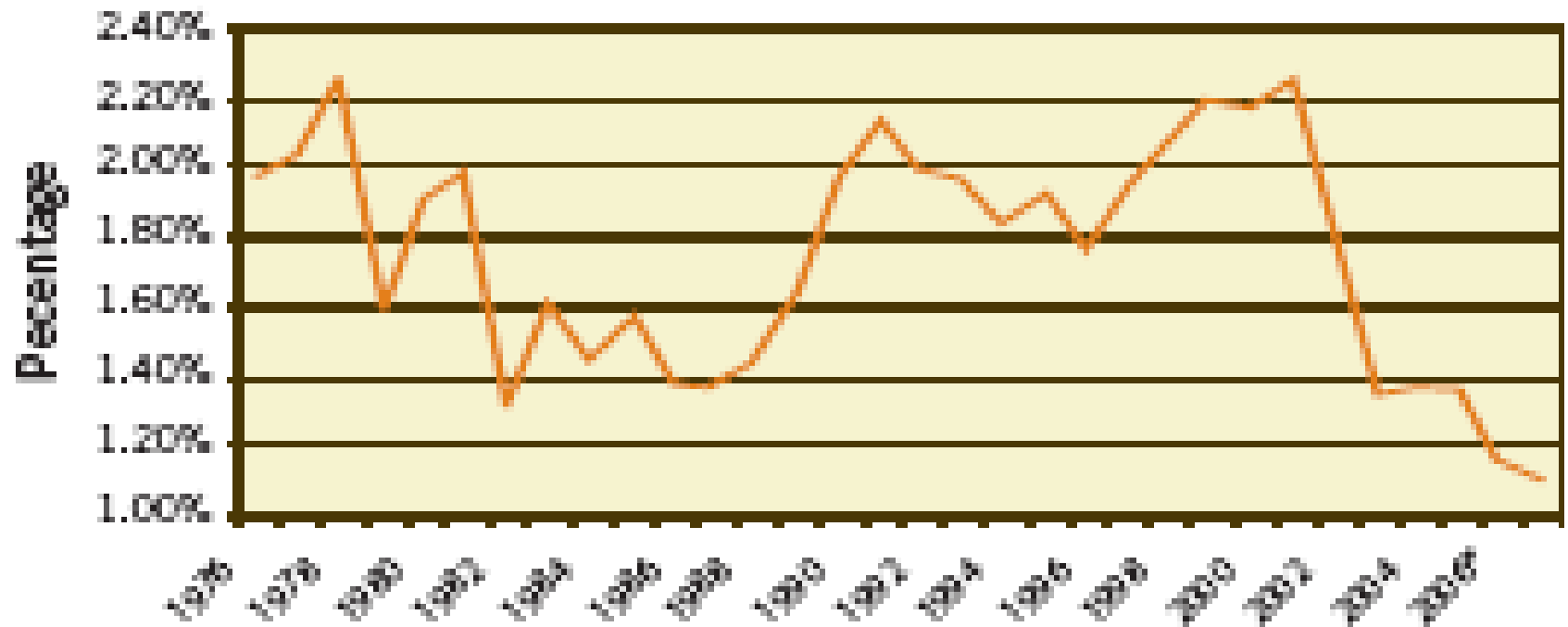


# Present Day Trends

1. Loss of wetlands
2. Shorelines developing
3. Water quality decline
4. Fragmentation of forests and prairies
5. Rise in invasive species
6. Development isolating public recreation lands

# Ch. III, Funding

## Environmental Spending as % of General Fund 30 Year History



# Funds Inadequate

- State funds down 47%
- Lottery Revenue just \$19 million/year
- Local governments needs not addressed



# Ch IV, Natural Wealth

- **Public Health:**
  - Drinking Water contamination
  - Air pollution leads to over \$1billion
  - Obesity and places to exercise

# Economic Engine

- Tourism = \$9.2 billion industry. Scenic Touring is #1 tourist activity
- Fishing, hunting, wildlife watching generate \$4.2 billion
- Forestry and Farming add an additional \$6.9 billion.

# Property Values

- **2004 Study - Water Quality directly increase lakeshore property values**
- **2005 Study – Proximity to open space has a positive effect on property values.**

# Attracting Workers

“amenities and the environment—particularly natural, recreation and lifestyles amenities—are absolutely vital in attracting knowledge workers.”

- Dr. Florida, 2002

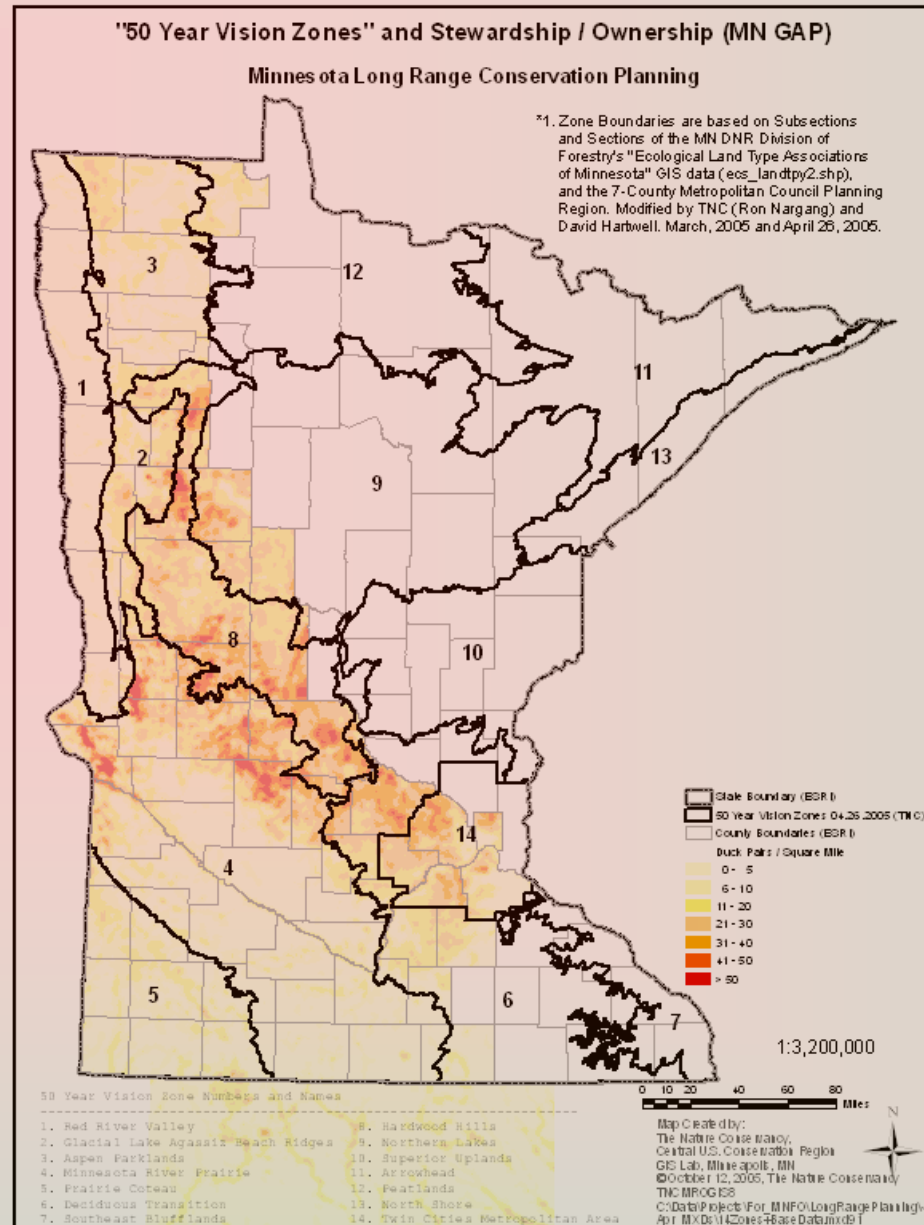


# Ch. 5, A time to act

- It's time to come together
- Enact a vision
- Create strategies that coordinate growth with conservation.



# 50 Year Vision Process



# Local Teams

Experts in:

- Parks/trails
  - Habitat, biology
  - Limnology, water quality
  - Land use/Landscape architecture
  - Forestry/Agriculture
- 
- Work completed in 2006

Thank you!



**Campaign for Conservation**

